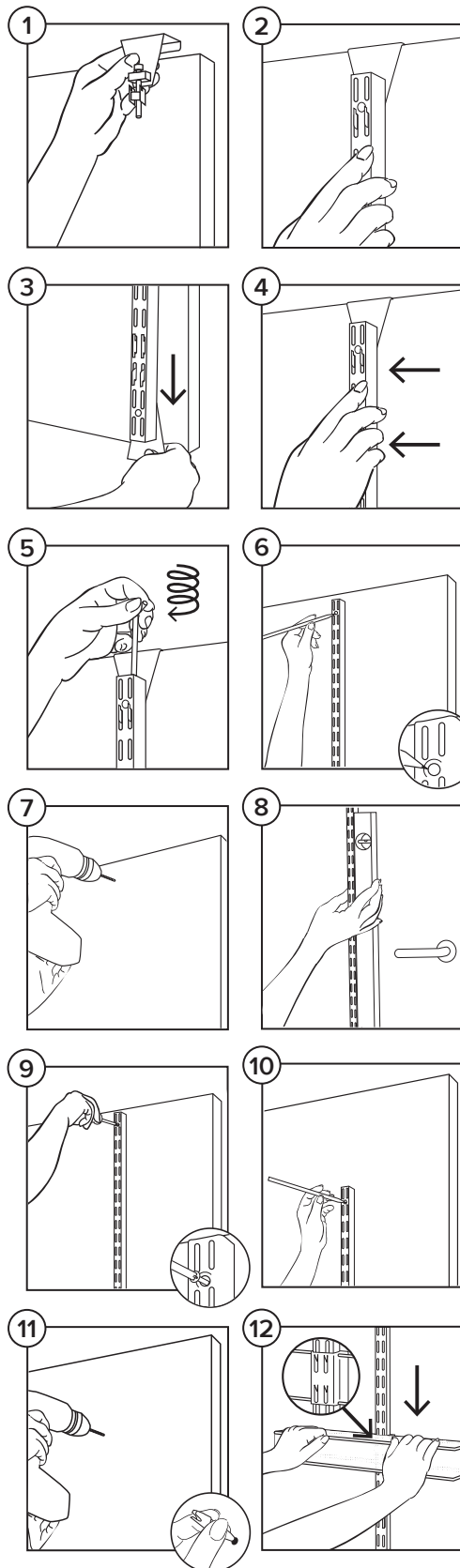


elfa® Door & Wall Rack System Assembly Instructions



Tools needed: For Door – Allen wrench (included) and level.
For Wall-Mounted – pencil, drill or screwdriver, and hardware.

CHOOSING HARDWARE

- If not using the overdoor hooks, please ask for the best installation hardware for your specific needs.

Attach Standard to the Door

- 1 Place the shorter hook (that features the screw) over the top of the door.
- 2 Fit the second set of slots on the Standard over the hook.
- 3 Attach the longer hook to the Standard under the bottom of the door. Pull down to lock it in position. The bottom hook should not be tight against the door.
- 4 Adjust the Standard until it is square to the floor.
- 5 Use the included Allen wrench to tighten the top screw.

Install in a Solid Door

- 6 Position Standard on door and mark screw placement.
- 7 Drill a pilot hole with a 1/10"/2.5mm drill bit.
- 8 Make sure Standard is square to the floor.
- 9 Screw Standard to the door.

Install in a Hollow Door

- 10 Position Standard on door and mark screw placement.
- 11 Drill hole using a 1/4"/7mm drill bit and insert Anchor. Position Standard square to the floor. Insert screw into Anchor and tighten.

Add Baskets

- 12 Align the tabs on the back of Basket or Utility Board with the slots on the Standard; pull down to lock in place.

ONLY AT 