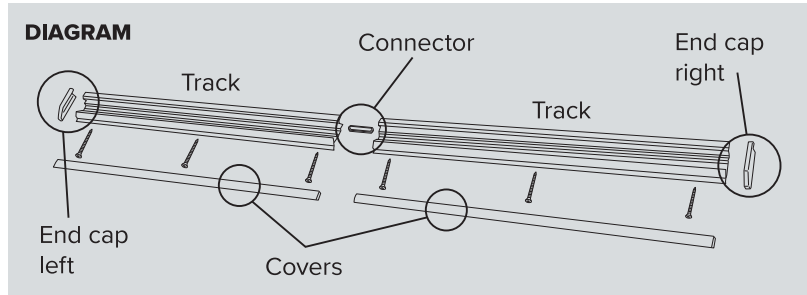
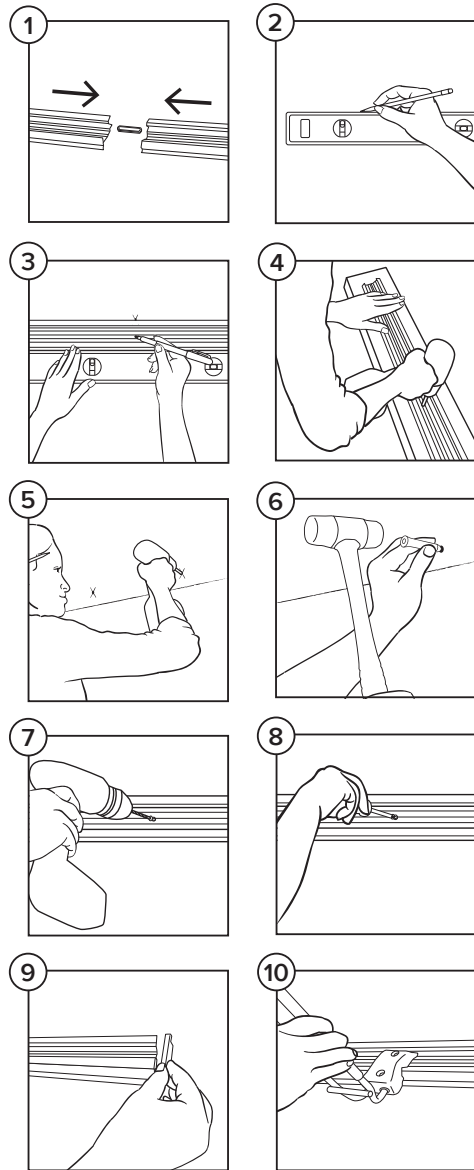


elfa® 5-Hook Storage Track Assembly Instructions

Things you'll need: 4' Level, Scrap Piece of Wood, Drill, Stud Finder, Screwdriver, Mallet, Pencil and Permanent Marker



Assemble the Track

- 1 Break apart one Set of End Caps and Connector. Position the Connector between the two Tracks. Push pieces together (see diagram).

Mount the Connected Track to the Wall

- 2 Position a 4' level on the wall where you want to place your connected Track. Draw a line above the level – this will be where you place the bottom of your Track. Use a Stud Finder to locate any studs along the line. Mark the location of any studs along the line with a pencil or a piece of blue tape.
- 3 Position the level on the wall below the line and rest the connected Track on top of the level. Mark an X on the Track with a permanent marker to indicate the location of the stud(s). Mark up to two additional hole locations on the Track for a total of three holes per Track.
- 4 Place the connected Track on a piece of wood and drill ¼" holes through the Xs. Drill ¼" holes at other marks.
- 5 Position the connected Track on the wall above the line and mark the location of the non-stud holes with a pencil. Drill ⅜" holes in the wall at the marked spots.
- 6 Install drywall anchors in the ⅜" holes. Remove screws and tap anchors flush to the drywall with a mallet.
- 7 Position connected Track and insert screws into anchors. Tighten screws with electric drill. Insert wood screws into the ¼" Stud holes. Tighten all screws with an electric drill and #2 Phillips head bit.
- 8 In order for the wall anchors to be secure, it is important to HAND tighten the screws at the end until they stop turning.
- 9 Add Covers and End Caps to Tracks (see diagram).

Add Utility Hooks

- 10 Add Hooks by inserting the top under the lip and push down to lock in place.

ONLY AT **The Container Store®**